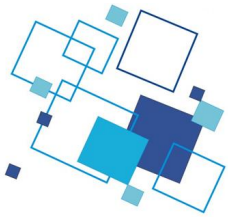
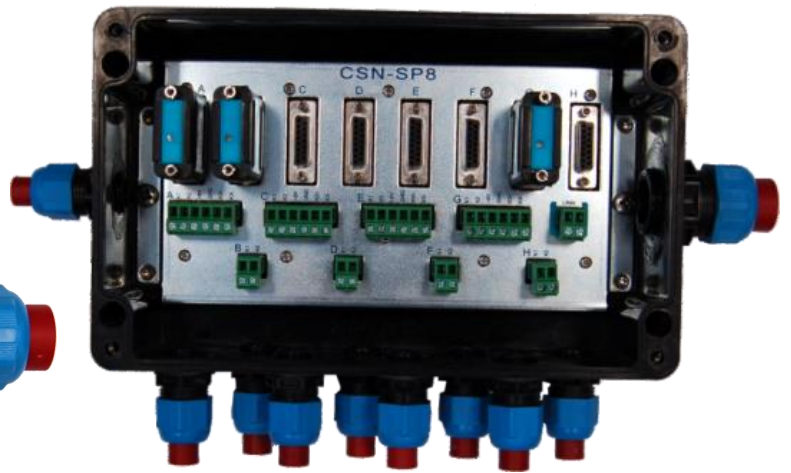
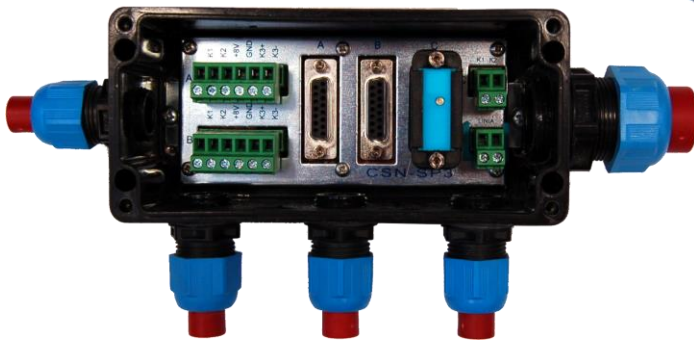


CONNECTION BOX CSN-SP

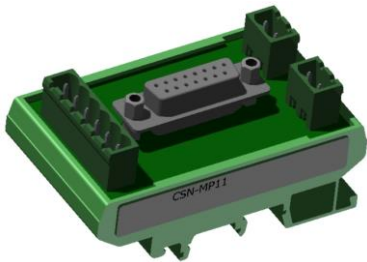
CONNECTION MODULE CSN-MP



CSN-SP3



CSN-SP8



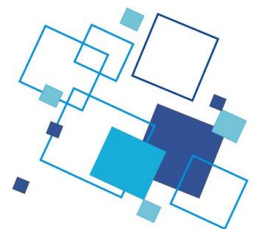
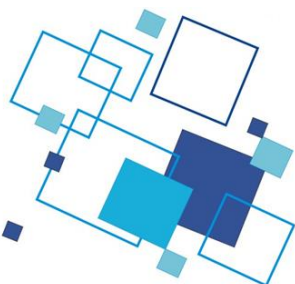
CSN-MP11



CSN-MP10



CSN-MP0



Catalogue card



DESCRIPTION

Junction boxes CSN-SP and connection modules CSN-MP are components for installation of transmitters channel type CSN-10 CSN-11.

Junction boxes CSN-SP are in two versions:

- CSN-SP3 – allows to install up to 3 transmitters: 2 transmitters have all interfaces and 1 transmitter only has a digital input for connecting a potential free inputs (including contact with diode)
- CSN-SP8 - allows to install up to 8 transmitters: 4 transmitters have all interfaces and 4 transmitters only have a digital input for connecting a potential free inputs (including contact with diode).

Connection modules CSN-MP enables to install one transmitter inside a housing having a minimum IP54 protection degree. They are available in three versions:

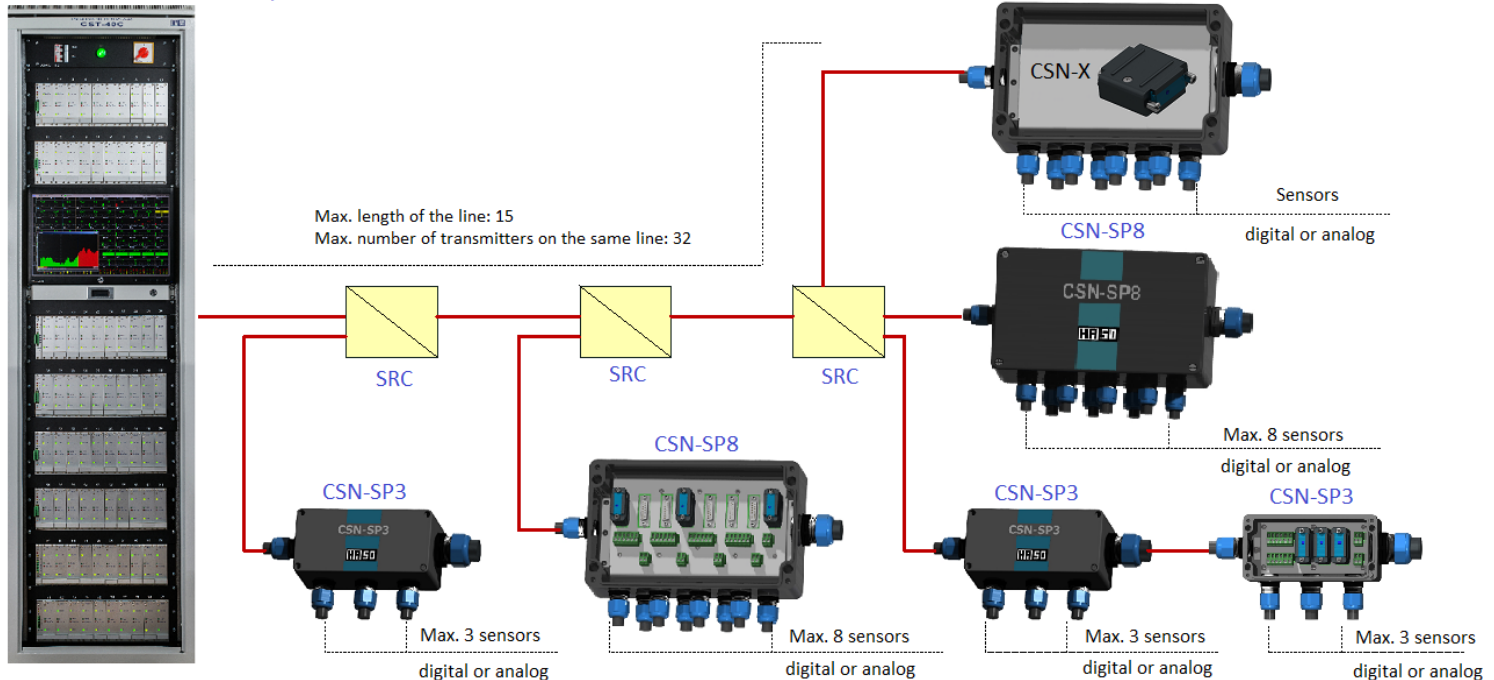
- CSN-MP0 - as DB15 connector with the derived cables, transmitters can be mounted in an enclosure having its own set of terminals
- CSN-MP10 - has only terminals for digital input (study of potential-free contact) and 1 pair of terminals to the line; module designed to be mounted on a DIN rail
- CSN-MP11 - has all available interfaces, and 2 pairs of line terminals; module designed to be mounted on a DIN rail.

BASIC TECHNICAL DATA

Connection box CSN-SP, Connection module CSN-MP

Purpose	Installation channel transmitters CSN-10 or CSN-11
Working temperature range	from -20°C to +50°C
Junction box CSN-SPx protection degree	IP65
Dimensions:	
Connection box CSN-SP3	75 x 160 x 75 mm
Connection box CSN-SP8	160 x 260 x 91 mm

Central Station CST-40A/C



Example of CSN-10, CSN-11 transmitters connection to central station CST-40A / 40C

EXPLOSION-PROOF MARK



I M1 Ex ia I Ma

EC type examination certificate: TEST 16 ATEX 0021X