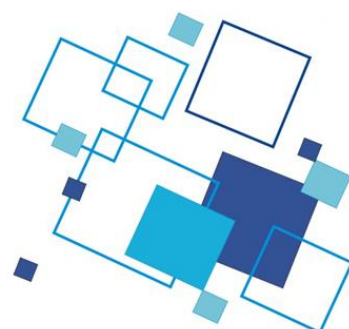
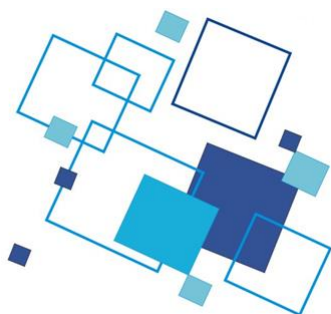
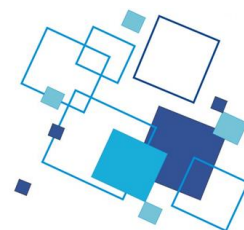


SENSOR RS1x

Catalogue card



DESCRIPTION

Sensor RS1x is a stationary device intended to measure gas concentrations and signaling exceeded preset limits. Sensor can be a component of a Distributed Telemetry System (RST) and is available as follows :

- RS10 – without signal,
- RS11 – with optical signal
- RS12 – with optical-acoustic signal.

The gas probeS1-X is mounted in the sensor. Probes can measure gas concentrations like methane (infrared or pellistor), oxygen, oxide and carbon dioxide, hydrogen sulphide, sulfur dioxide, nitric oxide and nitrogen dioxide (electrochemical method).

The sensor can be equipped with the following peripheral modules:

- communications interface RS-485,
- output of the swithing-off circuit UW1, UW2
- digital input
- analog output.

BASIC TECHNICAL DATA

Sensor RS1x		
Power supply	12 VDC (8-16V)	
Current consumption (max., voltage 12V)	version RSx-M0	other versions
version RS10	70mA	45mA
version RS11	125mA	100mA
version RS12	155mA	130mA
Measurement range	RS1x-M0: 0÷5% CH ₄ (catalic), 5÷100% CH ₄ (conductivity) RS1x-M1: 0÷100 CH ₄ RS1x-CD: 0÷5% CO ₂ RS1x-CO: 0÷2000ppm CO RS1x-NO: 0÷250ppm NO RS1x-ND: 0÷20ppm NO ₂ RS1x-SD: 0÷50ppm SO ₂ RS1x- HS: 0÷50ppm H ₂ S RS1x- O: 0÷25% O ₂	
Working temperatures range	-10 °C ÷ +40 °C	
Relative humidity range	10% ÷ 95% without condensation	
Working position	Probes pointing sideways, cover surface parallel to airflow	
Measurement methode	Continuous measurement, gas diffusion, method dependent on the type of gas being measured	
Display	OLED	
Button	„UP“, „DOWN“, „OK“	
Light signaler (RS11x, RS12x)	high brightness LED, red	
Acoustic signaler (RS12x)	95dB at 1m distance	
Dimension (withour sling)	version RS10	110x94x85mm
	version RS11	110x116x85mm
	version RS12	110x193x85mm
Weight	version RS10 and RS11, without sling	0,7 kg
	version RS12, without sling	1,5 kg
Casing internal protection	IP 65	

EXPLOSION-PROOF MARK

I M1 Ex ia I Ma

EC type examination certificate: TEST 17 ATEX 0005X

II 2G Ex ia IIB T4 Gb